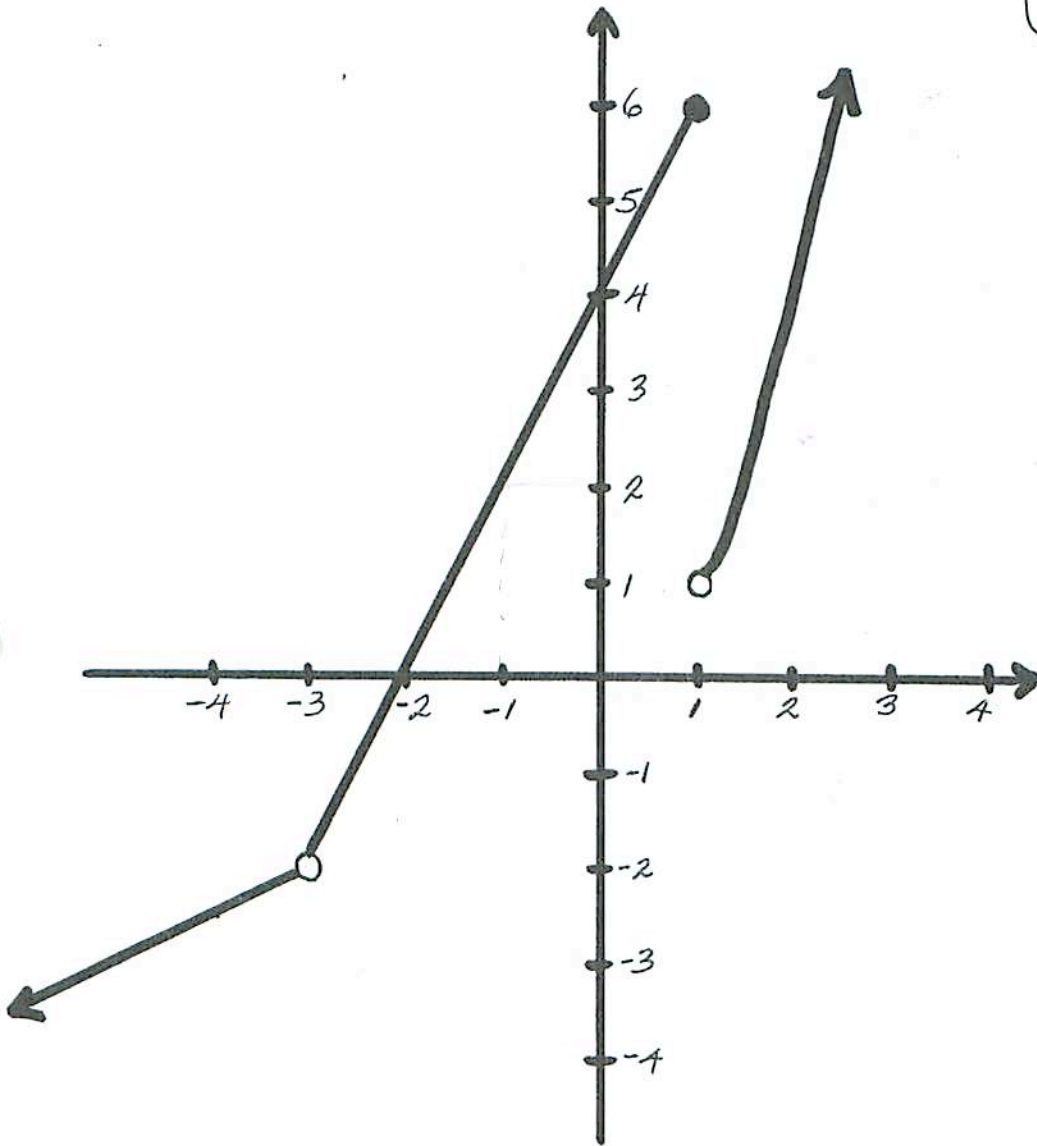


$$f(x) = \begin{cases} \frac{x-1}{2} & x < -3 \\ 2x+4 & -3 < x \leq 1 \\ x^2 & x > 1 \end{cases}$$



$a = -3$ $a = -1$ $a = 1$

1. WHAT IS THE VALUE OF $f(a)$?			
2. WHAT IS $\lim_{x \rightarrow a} f(x)$?			
3. DOES $\lim_{x \rightarrow a} f(x) = f(a)$?			